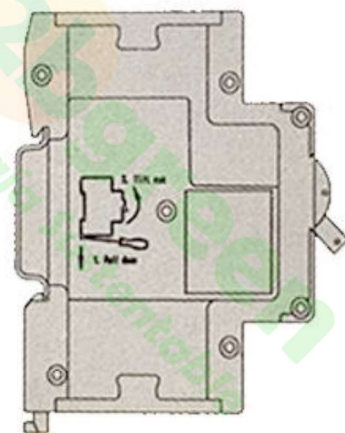
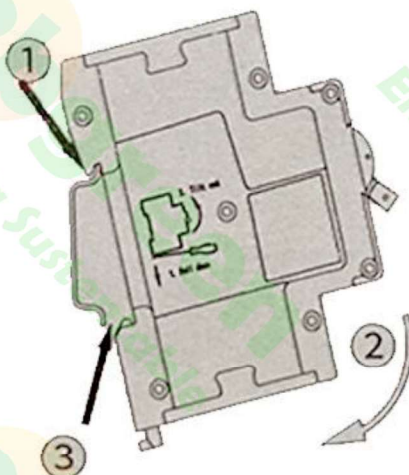


Manual de Instalación
INTERRUPTOR TERMOMAGNÉTICO
1050 VCD, 2P,
In= 20, 25, 32 A
Modelo: SL7N-125D
Marca: SUNTREE

1

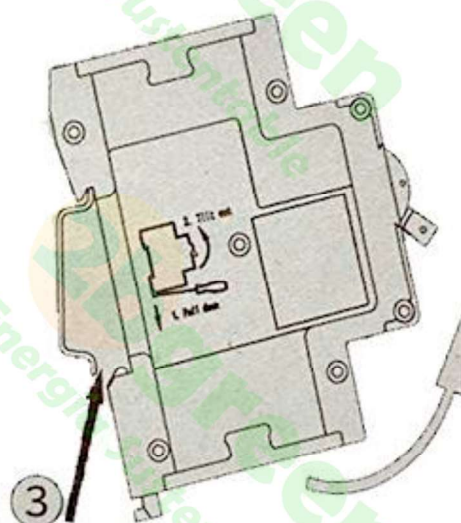
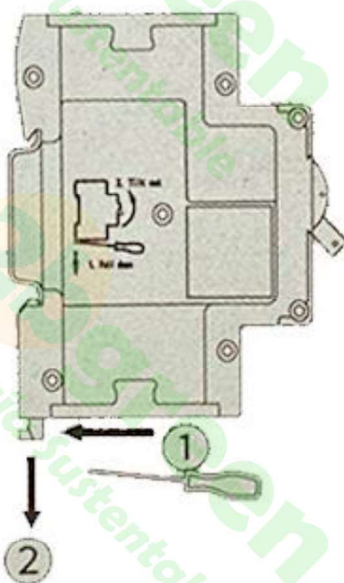
Instalación
Para Riel DIN de 35mm

Montaje sobre riel



2

Desmontaje del riel



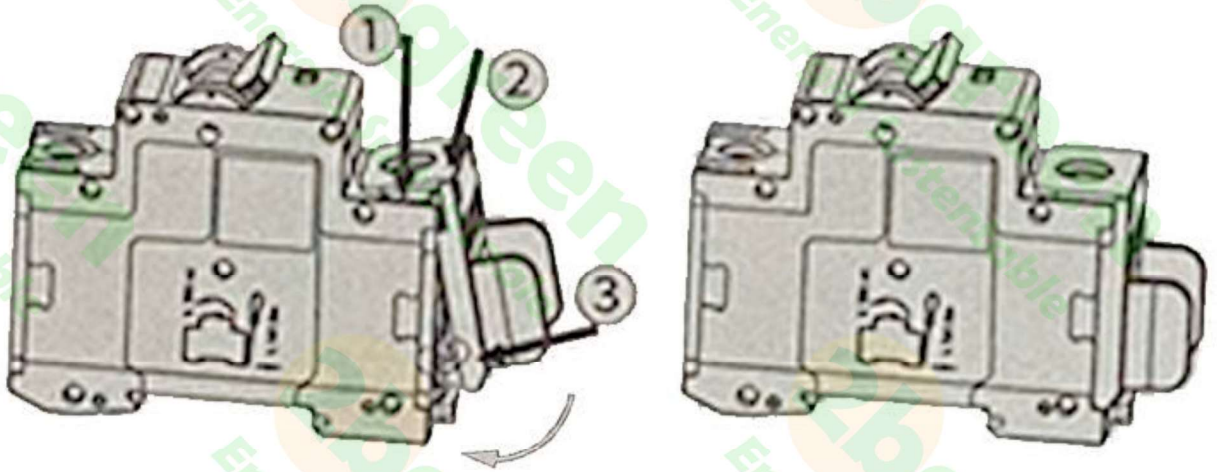
2bgreen

Energía Sustentable

Manual de Instalación
INTERRUPTOR TERMOMAGNÉTICO
1050 VCD, 2P,
In= 20, 25, 32 A
Modelo: SL7N-125D
Marca: SUNTREE

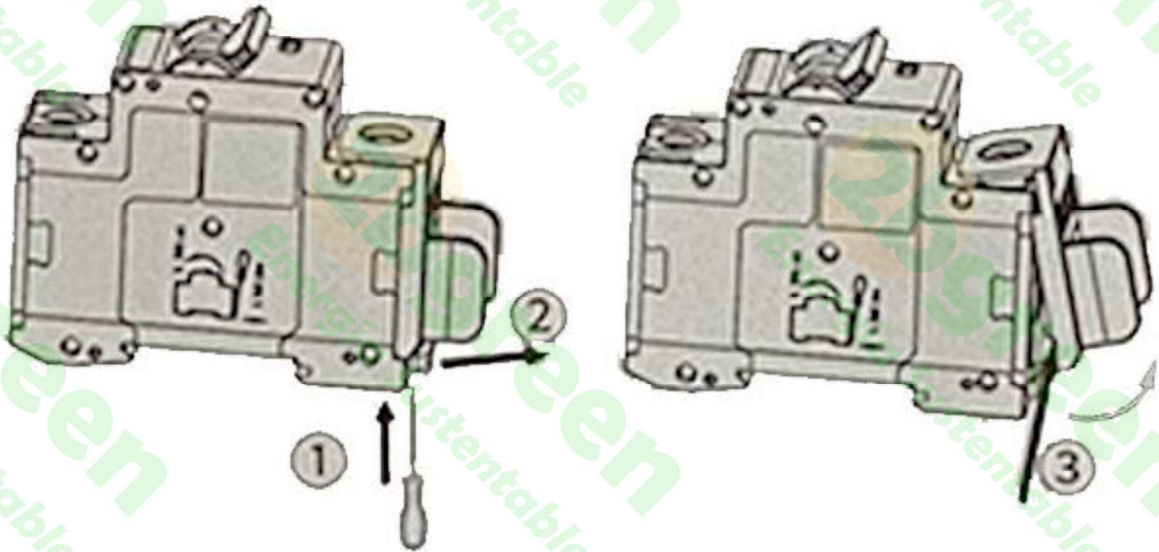
Instalación de cubierta

3



Remover la cubierta

4



Manual de Instalación
INTERRUPTOR TERMOMAGNÉTICO
 1050 VCD, 2P,
 In= 20, 25, 32 A
 Modelo: SL7N-125D
 Marca: SUNTREE

Diagrama de cableado

5

Poles	Wiring method			
	s	a	b	c
1P				
2P				
3P				
4P				